

MONTHLY ECONOMIC BRIEFING: JANUARY 2010

Dr Peter Stafford

<http://peterstafford.ie> : peter@peterstafford.ie : 086 150 2891

Contents:

- Employment
- Housebuilding
- Tax Receipts
- Capital investment
- Current investment

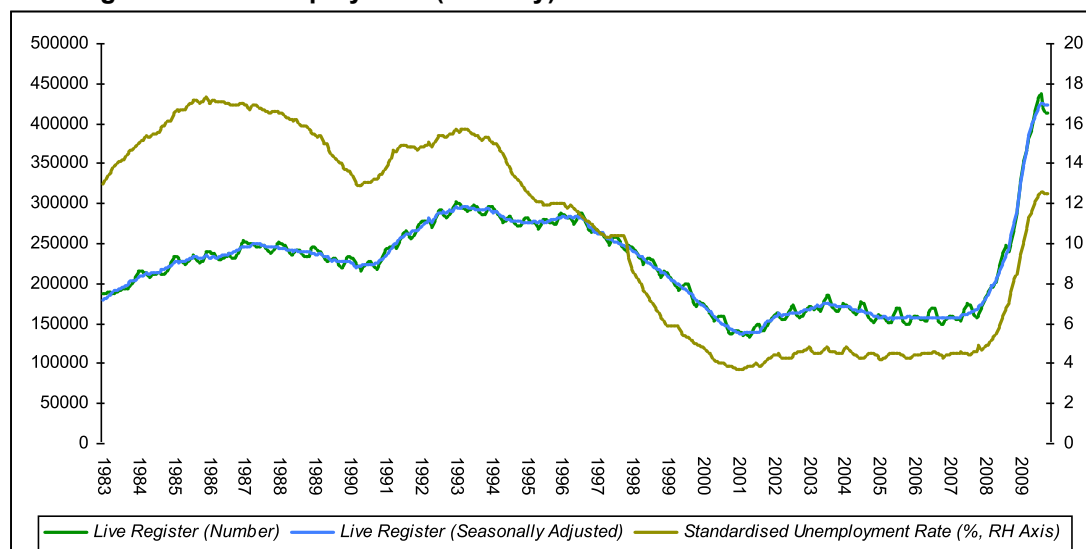
This briefing represents a digest of publically available information on the Irish economy released by the CSO, Department of Environment, Heritage and Local Government and the Department of Finance. Further information is available at the end of the document

Employment

The CSO regularly publishes the number of people on the Live Register (actual number and seasonally adjusted figures) as well as the standardised unemployment rate.

The most recent information is for November 2009. In November unemployment stood at 12.5% while the seasonally adjusted Live Register was 423,400 people. The chart below shows this monthly information since 1983.

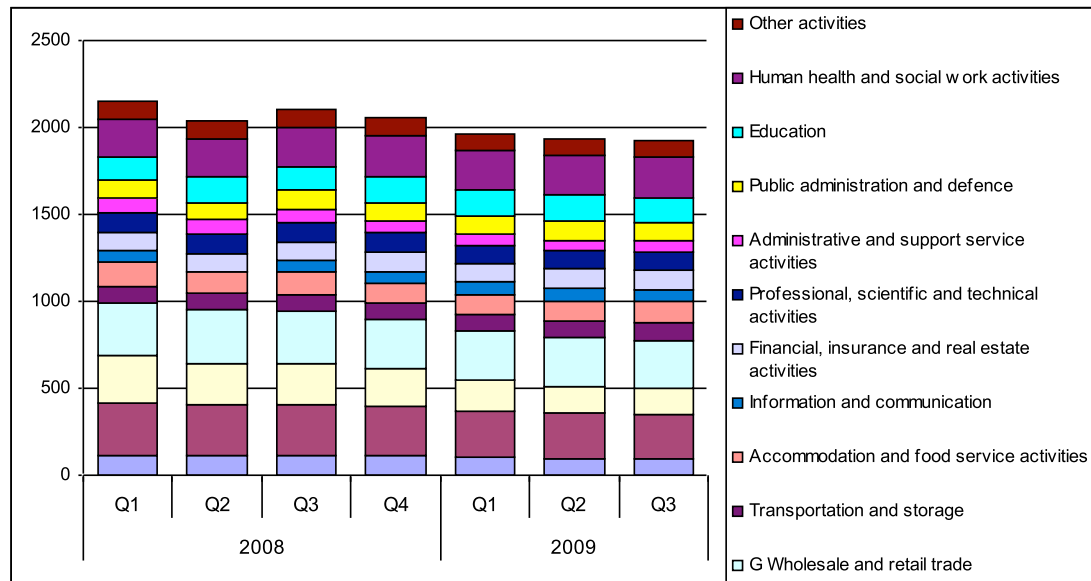
Live Register and Unemployment (monthly)



The table below shows the composition of employment in Ireland over 2008 and 2009. This is taken from the Quarterly National Household Survey (Q3 200) published by CSO in December.

Details of the Live Register and Unemployment levels are produced monthly by the CSO. Details of Q4 2009 will be released in February 2010.

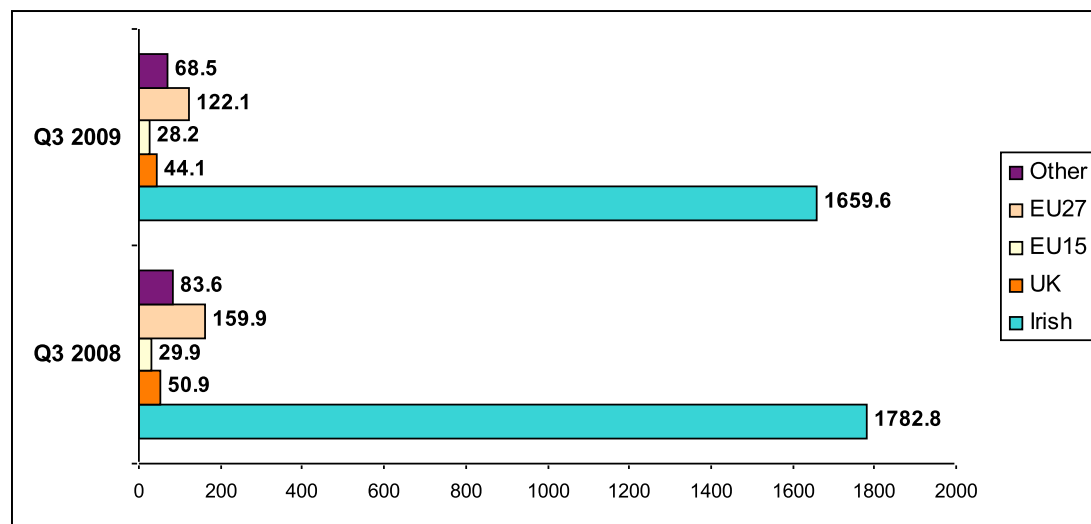
Employment Composition 2008 - 2009



Over 2008, the greatest decline in employment in Ireland has been in the construction sector which saw its employment levels fall by 131,100 between the start of 2008 and the third quarter of 2009. Overall, 227,400 jobs were lost in Ireland during this period. Current employment levels, at Q3 2009, are 1,922,400.

Nationality of Employment in Ireland

Of the 1,922,400 people in employment in Q3 2009, 1,659,600 (86.3%) are Irish nationals. During the same quarter of 2008, 1,782,800 were Irish nationals representing 84.6% of total employment. Over the year, employment amongst those from the Accession States of the EU has fallen by 37,400 people.



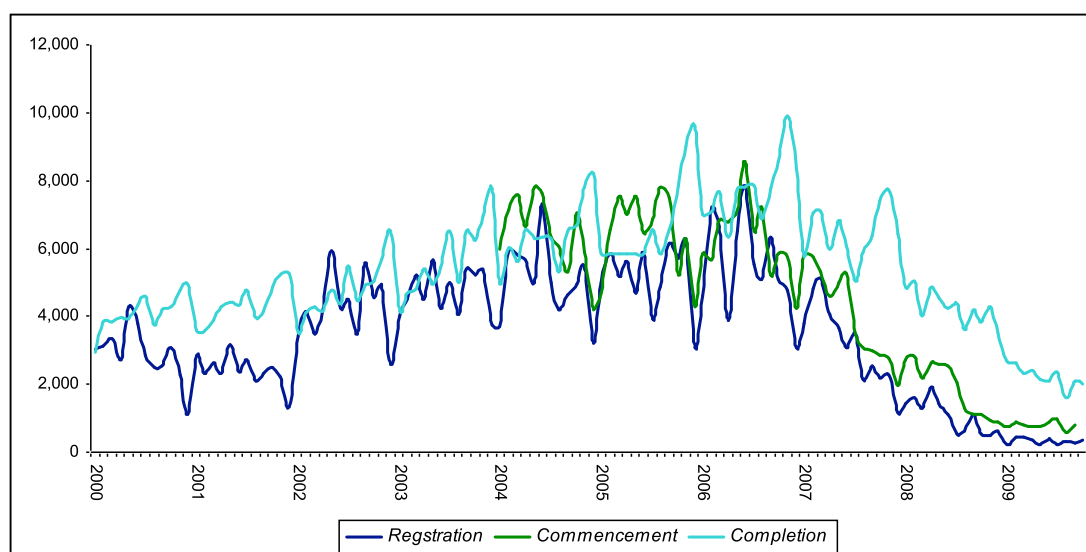
Housebuilding

The DoEHLG releases data on housing registrations, commencements and completions. The latest public information relates to the end of October (end of September for commencements). Further, more detailed statistics will be published by the Department later in January 2010.

Cumulative data to date:

Registrations	(Jan-Oct) 3,313	(11,595 in the same period of 2008)
Commencements	(Jan-Sep) 7,283	(19,895 in the same period of 2008)
Completions	(Jan-Oct) 22,354	(43,513 in the same period of 2008)

Monthly Housing Statistics



Exchequer Receipts

The Department of Finance produce details of income and expenditure each month. The following information relates to the end of December 2009, released on the 5th of January 2010.

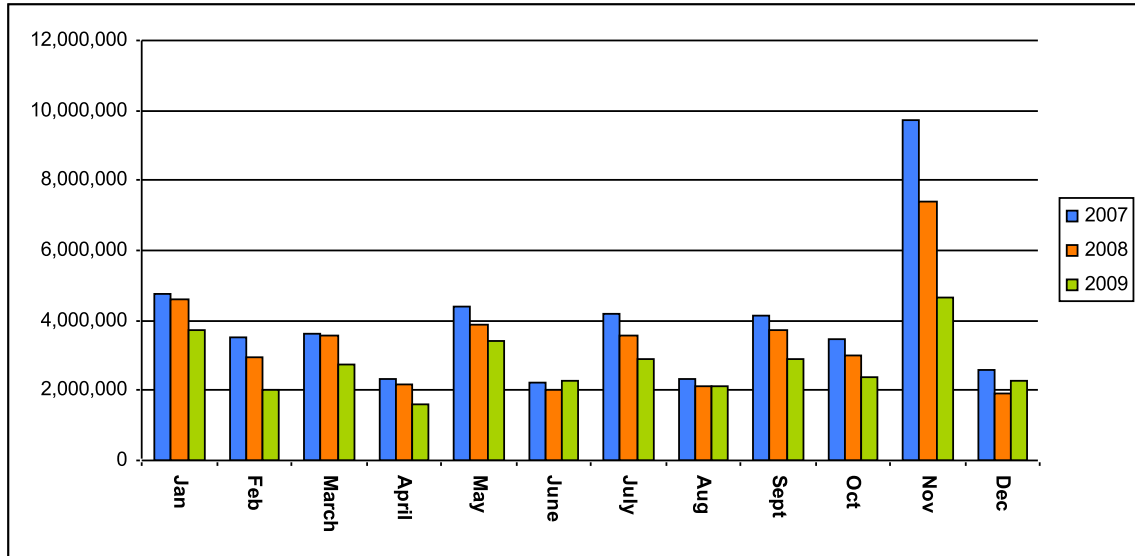
Over the course of 2009, total tax receipts collected by the Department of Finance stood at €33.04 billion. The major sources of taxation revenue are broken down as follows:

Tax Head	2007	2008	2009
Stamp Duty	€ 3,185.60 m	€ 1,650.79 m	€930.00
Capital Gains Tax	€ 3,105.49 m	€ 1,430.08 m	€542.00
Value-Added Tax	€ 14,496.58 m	€ 13,429.60 m	€10670.00
Income Tax	€ 13,572.41 m	€13,176.85 m	€11835.00
Corporation Tax	€ 6,390.62 m	€ 5,056.89 m	€3900.00
Total Tax Income	€ 47,249.53 m	€ 40,777.19 m	€33043.00

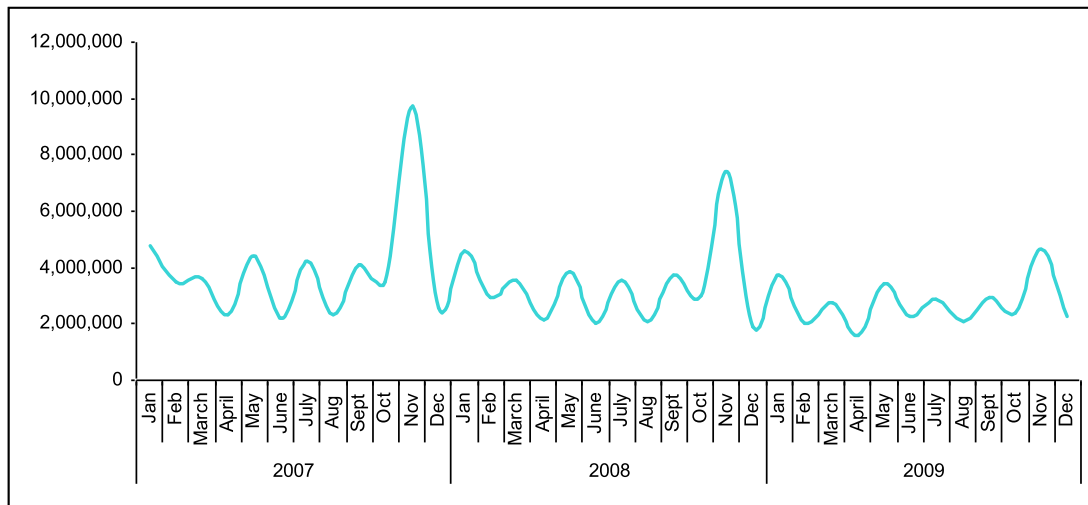
Thus, total tax income fell during 2008 by some €6.4bn (13% of 2007 income) and again over 2009 by €7.7 billion. In 2009, the bulk of the decline came from lower levels of stamp duty and capital gains tax. Stamp Duty declined from 6.7% of all tax receipts in 2007 to 4% in 2008 and only 2.8% of all tax receipts in 2009.

The charts and tables below show the monthly taxation income across the major tax heads in 2007, 2008 and 2009.

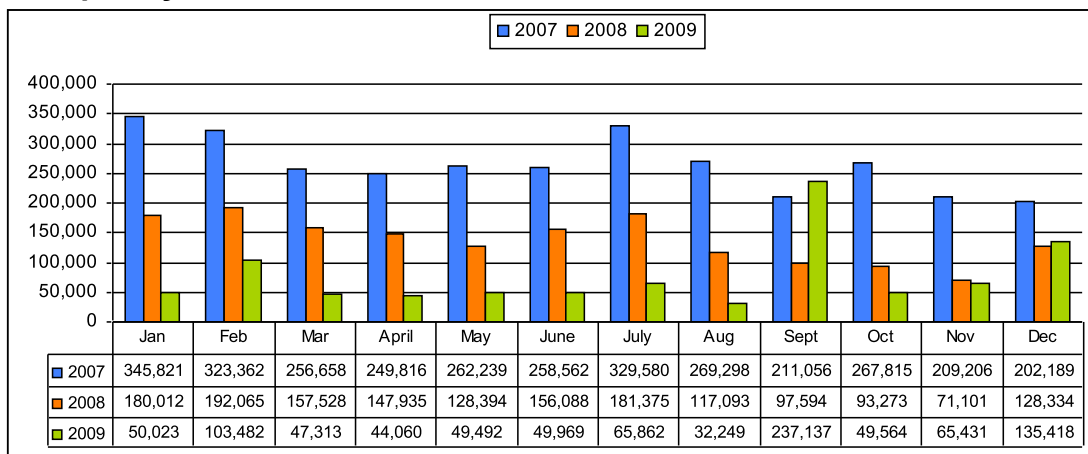
Total Tax Take

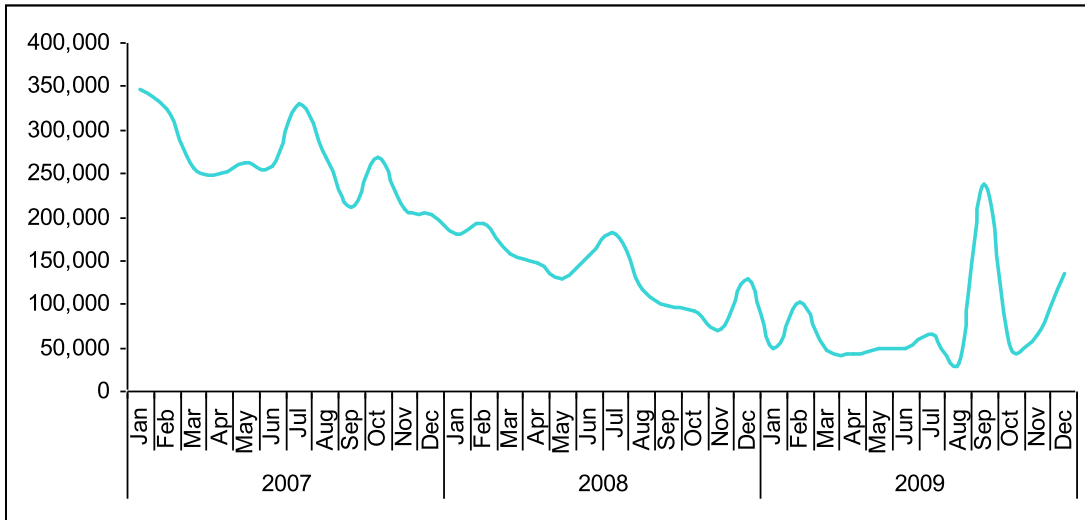


Monthly Receipts

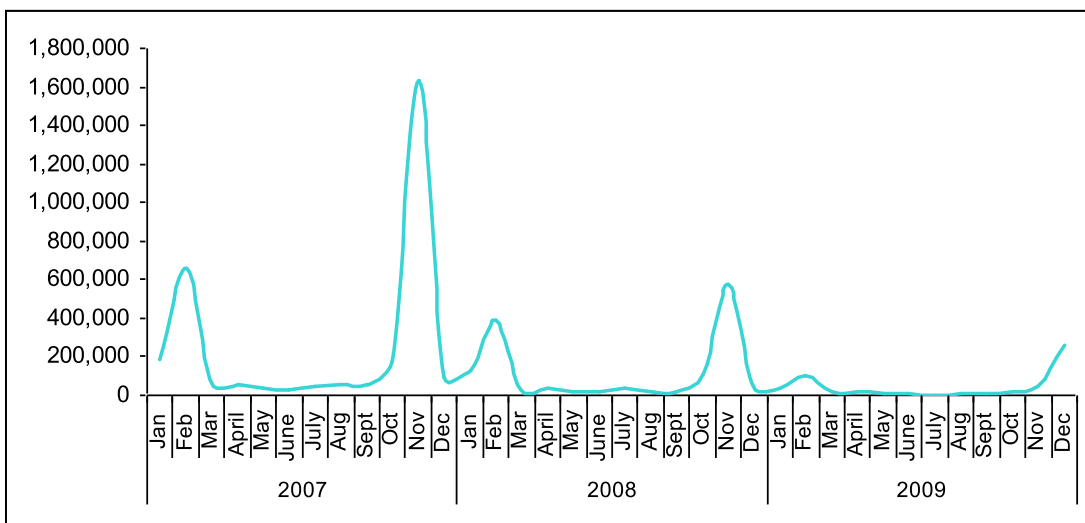
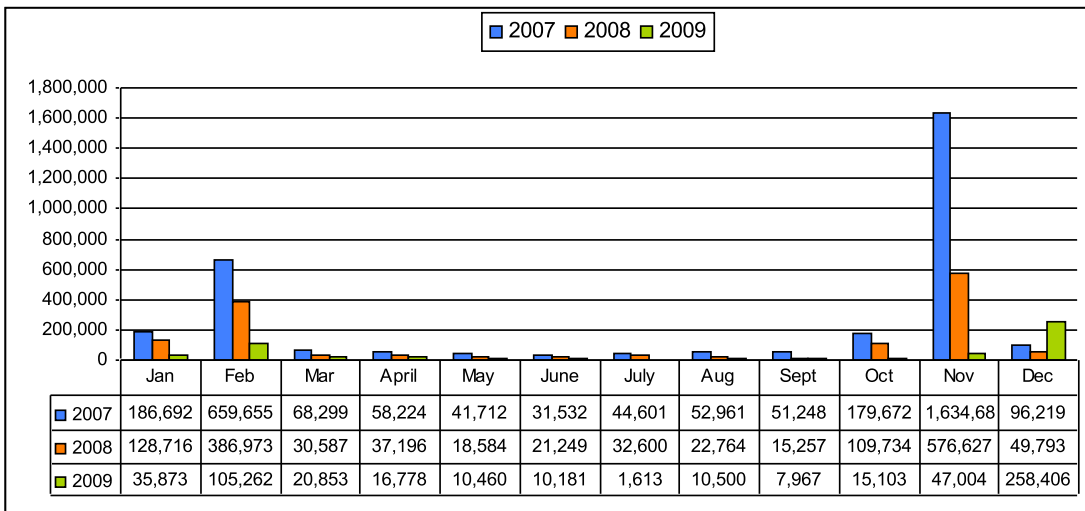


Stamp Duty

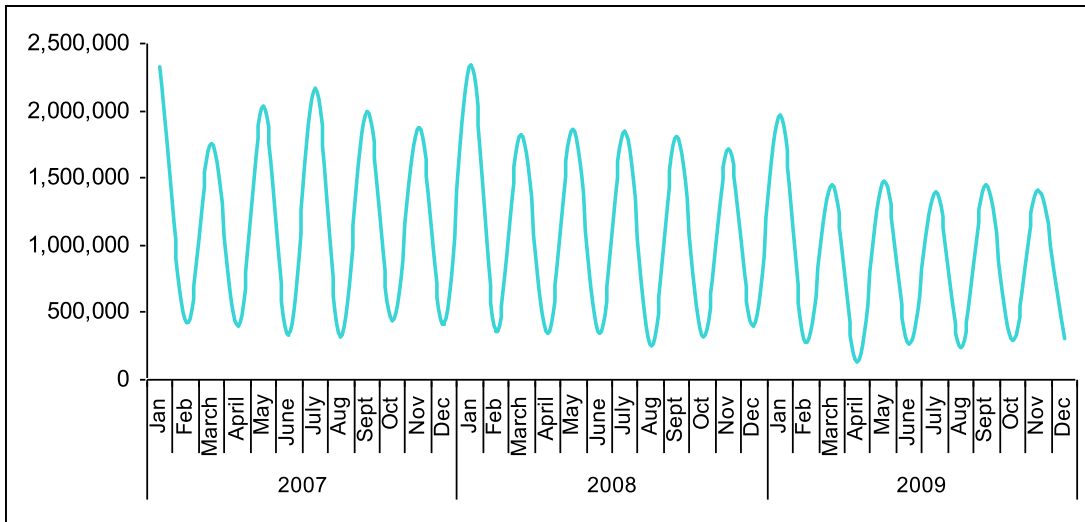
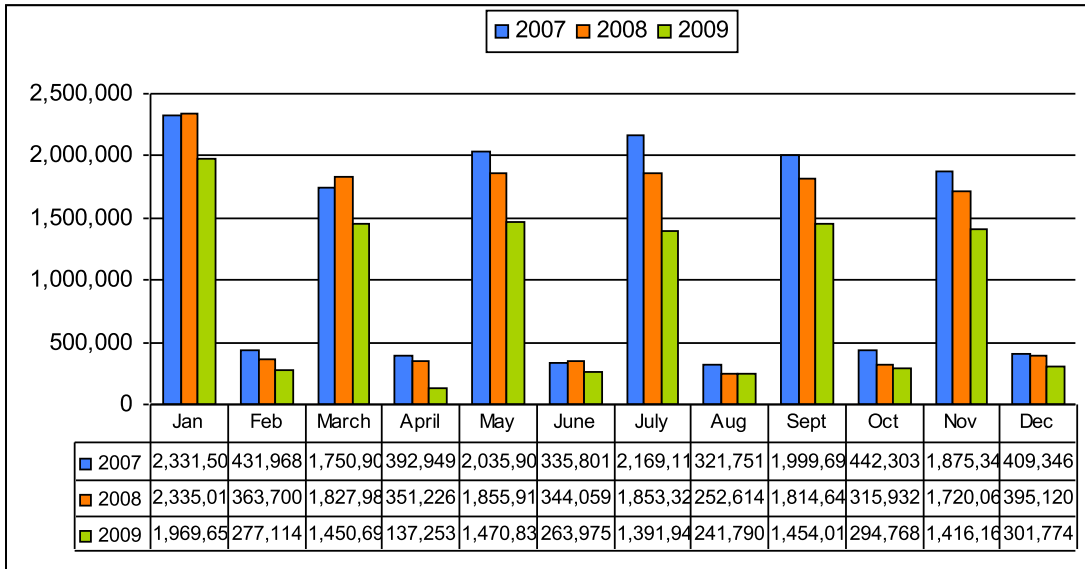




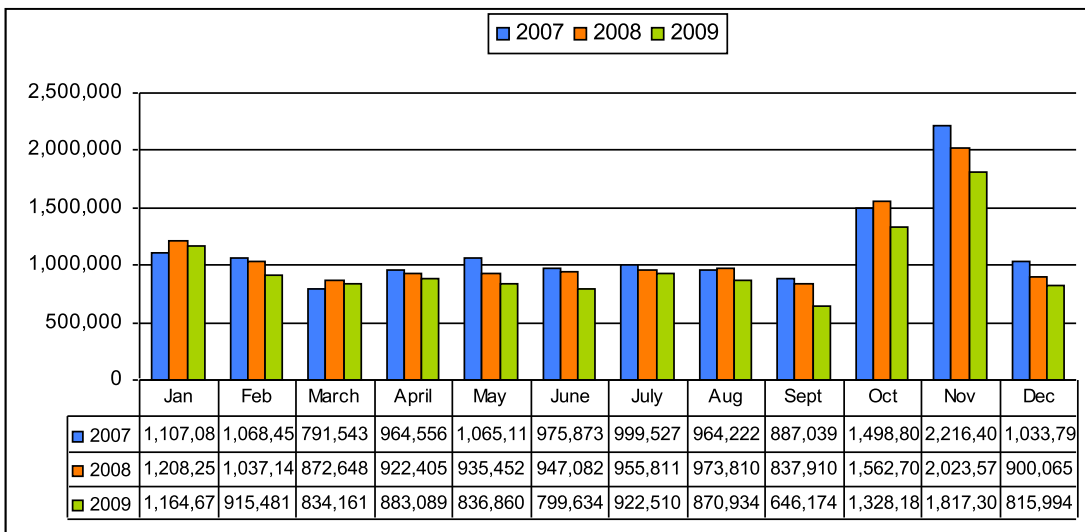
Capital Gains Tax

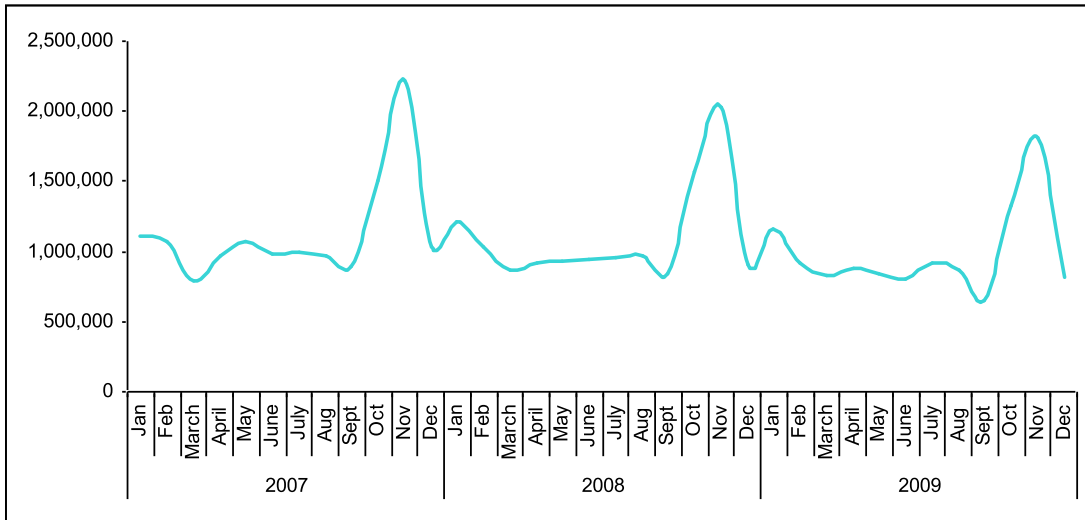


Value-Added Tax

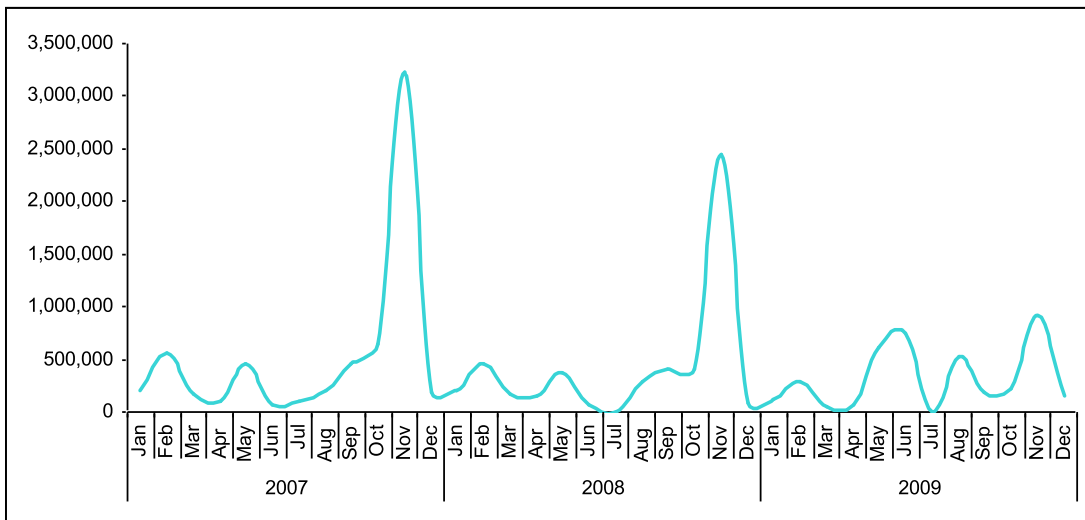
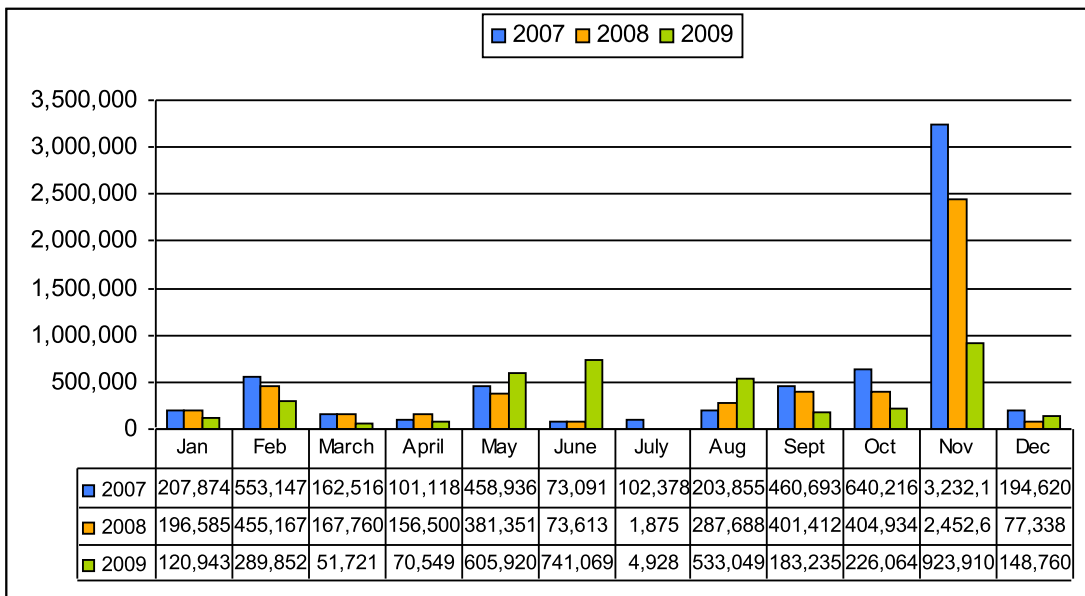


Income Tax





Corporation Tax



Capital and Current Department Expenditure

MINISTERIAL VOTE GROUP	Performance against profile at end-December				Year-on-Year Performance	
	End 2009 Profile	End 2009 Outturn	Variance	Variance	End 2009 v End 2008*	
	€m	€m	€m	%	€m	%
AGRICULTURE, FISHERIES & FOOD	1,599	1,559	-40	-2.5%	-96	-6%
Current	1,123	1,012	-111	-9.8%	8	1%
Capital	476	547	70	14.8%	-103	-16%
ARTS, SPORT & TOURISM	535	532	-3	-0.6%	-175	-25%
Current	400	398	-3	-0.9%	-37	-8%
Capital	135	135	0	0.0%	-138	-50%
COMMUNICATIONS, ENERGY & NATURAL RESOURCES	271	236	-35	-12.7%	-30	-11%
Current	108	118	10	9.9%	-7	-5%
Capital	165	120	-45	-27.3%	-23	-16%
COMMUNITY, RURAL & GAELTACHT AFFAIRS	444	442	-3	-0.6%	-47	-10%
Current	329	330	1	0.3%	-27	-8%
Capital	115	111	-4	-3.1%	-20	-16%
DEFENCE	988	974	-14	-1.5%	-93	-9%
Current	971	956	-15	-1.5%	-81	-8%
Capital	17	18	1	3.1%	-12	-40%
EDUCATION & SCIENCE	8,921	8,867	-54	-0.6%	-164	-2%
Current	8,080	8,028	-52	-0.6%	-174	-2%
Capital	841	839	-2	-0.2%	9	1%
ENTERPRISE, TRADE & EMPLOYMENT	1,469	1,468	-2	-0.1%	18	1%
Current	981	983	18	1.8%	-22	-2%
Capital	488	504	16	3.3%	38	8%
ENVIRONMENT, HERITAGE & LOCAL GOVERNMENT	2,662	2,649	-13	-0.5%	-511	-16%
Current	854	843	-11	-1.3%	-96	-10%
Capital	1,807	1,806	-1	-0.1%	-415	-19%
FINANCE	1,265	1,292	27	2.1%	-114	-8%
Current	1,055	1,090	35	3.3%	5	0%
Capital	209	201	-8	-3.9%	-119	-37%
FOREIGN AFFAIRS	777	758	-19	-2.4%	-229	-23%
Current	764	748	-18	-2.3%	-224	-23%
Capital	13	12	-1	-8.5%	-5	-31%
HEALTH & CHILDREN	12,565	12,779	214	1.7%	-971	-7%
Current	12,084	12,276	191	1.6%	-908	-6%
Capital	481	503	22	4.6%	-162	-24%
JUSTICE, EQUALITY & LAW REFORM	2,366	2,410	12	0.5%	-179	-7%
Current	2,262	2,295	33	1.5%	-147	-6%
Capital	136	115	-21	-15.1%	-32	-22%
SOCIAL & FAMILY AFFAIRS	10,917	10,635	-282	-2.6%	1,142	12%
Current	10,903	10,625	-279	-2.6%	1,144	12%
Capital	14	10	-4	-27.6%	-3	-20%
TAOISEACH'S	181	168	-12	-6.8%	-21	-11%
Current	181	168	-12	-6.8%	-21	-11%
Capital	0	0	0	0.0%	0	0%
TRANSPORT	2,516	2,514	-2	-0.1%	-677	-21%
Current	531	529	-2	-0.4%	-15	-3%
Capital	1,985	1,985	0	0.0%	-662	-25%
Less DEPARTMENTAL BALANCES	30	119	89		-	-
Pay contingency**	-94	na	-94	-	-	-
Total Net Cumulative Voted Spending	47,384	47,163	-221	-0.5%	-2,150	-4.4%
Current	40,501	40,256	-245	-0.6%	-501	-1.2%
Capital	6,884	6,907	24	0.3%	-1,649	-19.3%

This briefing digests the latest publically available data on the Irish economy. It will be circulated to subscribers of my website (<http://peterstafford.ie>). If you wish to circulate this information, please feel free provided it is circulated in its entirety.

If you would like any further details on any aspect of this data, feel free to contact me to discuss your requirements.

In addition, feel free to contact me to discuss any other research needs you may have:

Economic and business research consultancy for SMEs and business organisations. One-off or on-going **bespoke survey design**, data collection, analysis and reporting. **Writing, editing and publication** of reports and submissions. **Lecturing and conference speaking** on business sentiment, economic change and labour market trends.

Commentary, charts and tables © 2010 Peter Stafford

